



CHESTNUT RIDGE *Conservancy*

Membership Application

In an effort to assist the County of Erie in restoring and maintaining Chestnut Ridge Park in the midst of increasing expenses, a dedicated group of concerned citizens has come together to form the **Chestnut Ridge Conservancy**.

This not-for-profit 501(c)(3) organization was established to support the restoration and preservation of the rich natural, recreational, and historic resources that comprise our own Chestnut Ridge Park.

We are working with the Erie County Parks Department to:

- Define projects that need to be completed
- Raise funds through the generosity of corporations, community groups, and citizens
- Sponsor events to raise awareness and encourage county residents to take advantage of the park's facilities and scenery

We need your help to carry out our mission!

Please consider donating to our worthy cause. Ask your employer if they will match your contribution.

info@ChestnutRidgeConservancy.org • ChestnutRidgeConservancy.org •  /ChestnutRidgeConservancy

I want to help make a difference at
Chestnut Ridge Park!

(Please print legibly)



Name: _____

Address: _____

City: _____ State: _____ ZIP Code: _____

Telephone: _____

Email: _____

Please make your check payable to:

Chestnut Ridge Conservancy, Inc.

P. O. Box 1376

Orchard Park, NY 14127

The Chestnut Ridge Conservancy, Inc. is a 501(c)(3) corporation. Your contributions are tax deductible.

Please Join Today!

Complete the form below and mail your tax-deductible check to Chestnut Ridge Conservancy. You can also join online at: **ChestnutRidgeConservancy.org/membership**

Need a great gift idea? Give them a Chestnut Ridge Conservancy membership! Want to give a donation in someone's honor or memory to the Chestnut Ridge Conservancy? See the back of this page!

Chestnut Ridge Conservancy

P. O. Box 1376

Orchard Park, NY 14127

Thank you for your support!

Annual Membership Levels:

- ☐ Chestnut Family Membership \$100
- ☐ Family Membership \$50
- ☐ Individual \$30
- ☐ Senior Membership (55 & up) \$25
- ☐ Community Groups \$125
- ☐ Conservationist \$500
- ☐ Preservationist \$2,500
- ☐ Park Benefactor \$5,000

☐ My company will match my contribution.

I Would Like to Volunteer!

I am interested in helping with:

- ☐ Fund Raising
- ☐ Events Planning
- ☐ Event Setup, Cleanup, and Activities
- ☐ Administrative Tasks

Chestnut Ridge Park

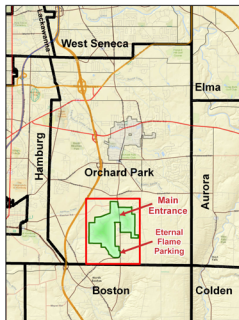


Erie County Department of
Parks, Recreation, and Forestry



Please Follow All Park Rules

- Park Hours:
Summer : 7 AM - 9 PM (Memorial Day- Labor Day)
Winter : 7 AM - Dusk
- Campfires are prohibited
- Cutting or destroying of any trees, plant life, or disturbance of wildlife is prohibited
- Leash dogs at all times
- Stay on marked trails
- Use Carry-in/ Carry-out Principle on trails
- Alcohol by permit only
- No glass containers allowed
- Speed limit on Park roads: 15 MPH



Hiking Trails		One-Way Distance
Trail		
◆ Boy Scout Trail		2.3 miles
◆ Eternal Flame Trail		0.56 miles
◆ Orienteering Trail		2.6 miles
◆ Reservoir Trail		0.65 miles
◆ Seufert Trail		0.23 miles
◆ Snowmobile Trail		0.34 miles
◆ Ward Hill Trail		0.9 miles
◆ Ward Hill Walkway		1.15 miles
◆ XC Ski Inner Loop		0.58 miles
◆ XC Ski Outer Loop		0.86 miles

● EASY: Well-maintained or paved; shorter trails intended for casual walking
 ■ MODERATE: Longer trails with some grades/ obstructions intended for hiking
 ◆ CHALLENGING: Long, more primitive trails, with steep grades or obstructions, intended for hardy experienced hikers

Mark C. Poloncarz
Erie County Executive

Daniel Rizzo
Commissioner of Parks

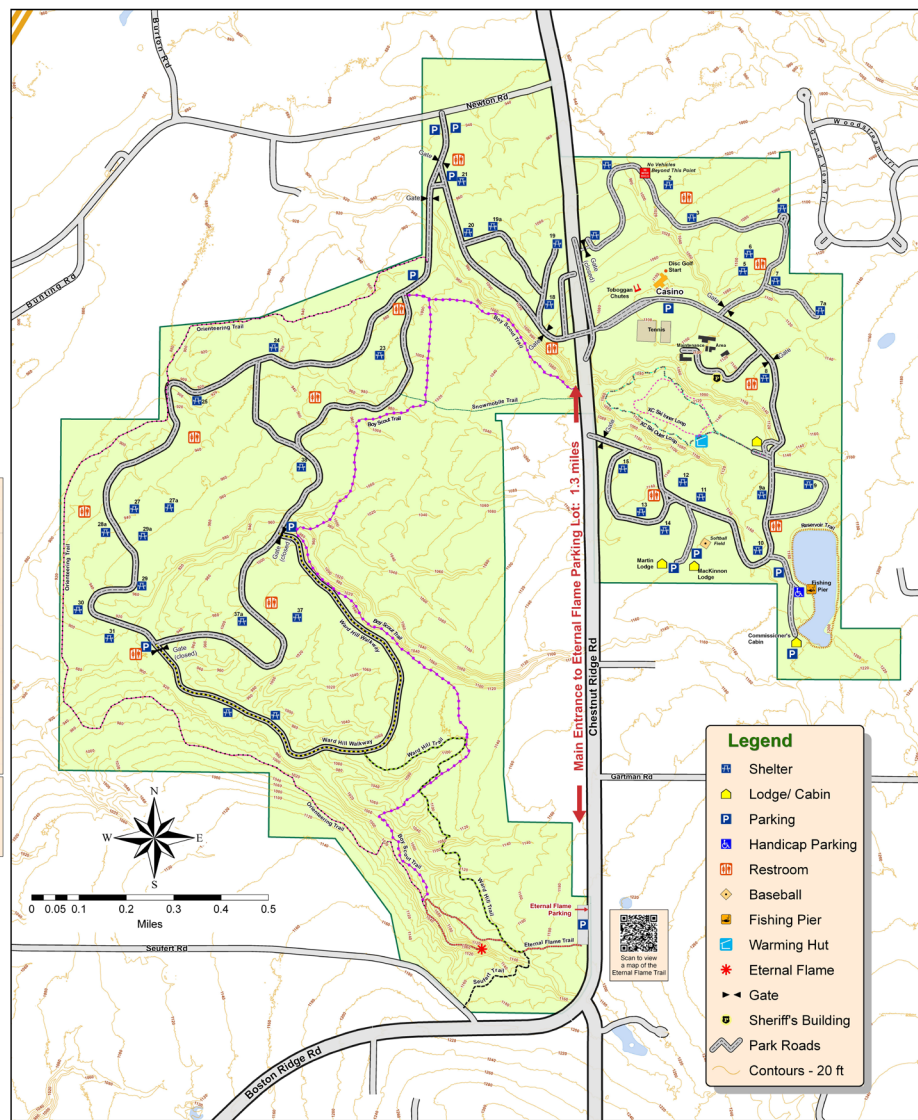


May 2015



For Emergencies: Call 911
All other County Park
Department questions:
Please Call: 716 - 858 - 7037

Mapping Provided by the
Erie County Office of Geographic Information Services



Gifts and Memorials

Chestnut Ridge Conservancy memberships make great birthday, wedding, anniversary, graduation, holiday, and “just because” gifts! With numerous levels to choose from, memberships are an affordable way to show someone you care.

Donations to the Conservancy also make thoughtful and cherished memorial tributes.

For more information regarding gifts memberships and memorials, please download the *Gift and Memorial Form* from our web site at ChestnutRidgeConservancy.org.

If you have questions or comments about memberships, memorials, or anything else regarding the park, please email us at info@ChestnutRidgeConservancy.org.

Follow us on Facebook — Facebook.com/ChestnutRidgeConservancy

Thank you for your continued support! The CRC has made a positive impact in the park thanks to the generosity of our members and sponsors.

