

Chestnut Ridge Park



Erie County Department of
Parks, Recreation, and Forestry



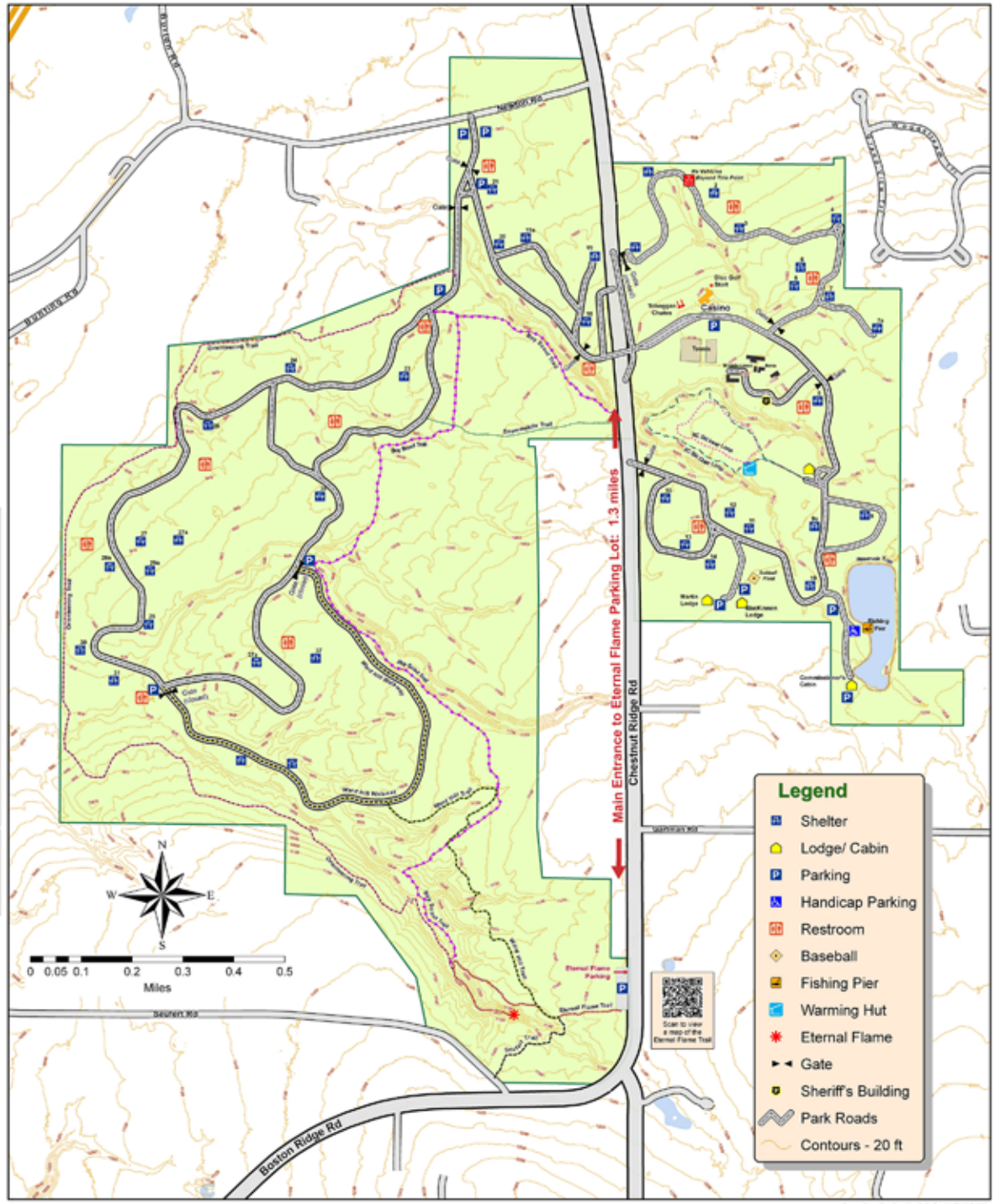
Please Follow All Park Rules

- **Park Hours:**
Summer : 7 AM - 9 PM (Memorial Day- Labor Day)
Winter : 7 AM - Dusk
- Campfires are prohibited
- Cutting or destroying of any trees, plant life, or disturbance of wildlife is prohibited
- Leash dogs at all times
- Stay on marked trails
- Use Carry-in/ Carry-out Principle on trails
- Alcohol by permit only
- No glass containers allowed
- Speed limit on Park roads: 15 MPH



| Hiking Trails | | One-Way Distance |
|---------------|---------------------|------------------|
| ◆ | Boy Scout Trail | 2.3 miles |
| ◆ | Eternal Flame Trail | 0.56 miles |
| ◆ | Orienteering Trail | 2.6 miles |
| ● | Reservoir Trail | 0.65 miles |
| ◆ | Seufert Trail | 0.23 miles |
| ◆ | Snowmobile Trail | 0.34 miles |
| ◆ | Ward Hill Trail | 0.9 miles |
| ● | Ward Hill Walkway | 1.15 miles |
| ◆ | XC Ski Inner Loop | 0.58 miles |
| ◆ | XC Ski Outer Loop | 0.86 miles |

| | |
|---|--|
| ● | EASY: Well-maintained or paved; shorter trails intended for casual walking |
| ◆ | MODERATE: Longer trails with some grades/ obstructions intended for hiking |
| ◆ | CHALLENGING: Long, more primitive trails, with steep grades or obstructions, intended for hardy experienced hikers |



| Legend | |
|--------|--------------------|
| ◆ | Shelter |
| ■ | Lodge/ Cabin |
| P | Parking |
| ♿ | Handicap Parking |
| ♻️ | Restroom |
| ⚾ | Baseball |
| 🎣 | Fishing Pier |
| 🔥 | Warming Hut |
| ★ | Eternal Flame |
| ➡️ | Gate |
| 👮 | Sheriff's Building |
| 🛣️ | Park Roads |
| 🏞️ | Contours - 20 ft |

Mark C. Poloncarz
Erie County Executive
Troy P. Schinzel
Commissioner of Parks



May 2015



For Emergencies: Call 911
All other County Park
Department questions:
Please Call: 716 - 858 - 7037

Mapping Provided by the
Erie County Office of Geographic Information Services